



High Street, London, E15

BUTLER  STAG





**Price Guide £475,000 - £500,000**  
**Welcome to the epitome of contemporary urban living – the prestigious City West Tower in the vibrant heart of Stratford. Discover the pinnacle of sophistication in this stunning three bedroom apartment, where luxury, comfort, and convenience converge.**



## Leasehold

- 980 Sq/Ft Internal Living Space
- Two Bathrooms
- Roof Top Gardens / Bike Storage
- Stratford Station and Bromley By Bow Stations Close By
- 992 Year Lease
- 24hr Concierge Service / Resident Only Gymnasium / Two Business Lounges
- Waterside Complex
- Chain Free

Upon entering this residence, you're immediately struck by the seamless blend of style and functionality. The spacious open-plan living area is bathed in natural light, courtesy of floor-to-ceiling windows that offer panoramic views of the iconic east London landscape. This expansive space provides the perfect backdrop for every occasion.

The sleek and modern kitchen boasts premium appliances, stylish cabinetry, and quartz countertops.

The three well-appointed bedrooms are thoughtfully designed with plush carpeting, ample closet space, and large windows that frame breath-taking views. The principal bedroom is a true retreat, featuring a luxurious en-suite bathroom and fitted wardrobes.

Conveniently located in the heart of Stratford, this exceptional residence offers unrivaled access to an abundance of dining, shopping, and entertainment options. With Stratford International station just moments away, the entirety of London is at your doorstep, providing endless opportunities for exploration and adventure.



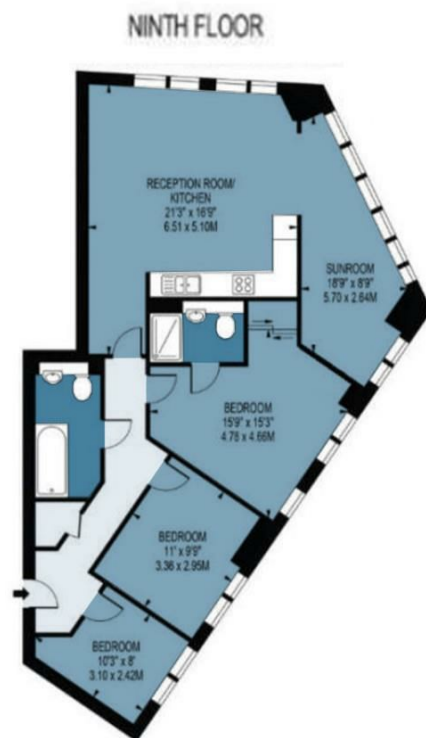




## City West Tower

Approx. Gross Internal Area 91.06 Sq M ( 980 Sq Ft )

BUTLER & STAG



Measurements are approximate and for illustration purposes only. While we do not doubt the accuracy and completeness, we advise you conduct a careful independent assessment of the property to determine monetary value.  
© @modephoto.uk www.modephoto.co.uk

IMPORTANT NOTICE - These particulars have been prepared in good faith and they are not intended to constitute part of an offer or contract. We have not performed a structural survey on this property and the services, appliances and specific fittings have not been tested. All photographs, measurements, floor plans and distances referred to are given as a guide and should not be relied upon.

BUTLER & STAG

☎ 020 8102 1236

🏠 508 Roman Road, Bow, London, E3 5LU

✉ bow@butlerandstag.com

[www.butlerandstag.uk](http://www.butlerandstag.uk)